



Mode	CHV-US110-H	CHV-US100D-H	CHV-100D-E	CHV-US120-H	CHV-110-E	CHV-110T-E
Field of view	110°	110°	110°	110°	110°	110°
Depth of view	5-50mm	5-50mm	5-50mm	5-50mm	5-50mm	5-50mm
Deflection up/down	120°/120°	120°/120°	160°/130°	120°/120°	160°/130°	160°/130°
Insertion dia.	2.5mm	3.3mm	5.3mm	3.0mm	4.8mm	5.3mm
Working length	600mm	600mm	380mm	600mm	380mm	380mm
Working channel	1.2mm	1.2mm/0.6mm	2.2mm/1.0mm	1.2mm	2.2mm	2.6mm
Rotation	Y	N	N	Y	Y	Y
Deflection locker	Y	Y	Y	Y	Y	Y



Adapter

Compatible with previous generation processor PL-2100

PL-3000

Model	PL-3000	
Power	Voltage	100-240 VAC
	Frequency	50/60 Hz
	Rated input	56 VA
Illumination	Lamp	2W LED
	Lamp life	30000 h
	Color temperature	3000K-7000K
Functions	White balance, Luminance control(+/-), Sharpness, Gain, GAMA, IRIS, IRIS area, Enhancement, Denoise, 3D Denoise, Zoom, Freeze, Capture, Record, Border, USB Storage	
Output	SDI*2, DVI*1, S-Video*1, CVBS*1, PS/2*1	
Storage	USB 3.0	
Dimensions	L:350mm*W:355mm*H:110mm	
Weight	4.2 kg	

Accessories

Model number	Product Name	Shape	Spike	OD(mm)	Working Length(mm)
FTL-BF-15-120-O-C-R	Disposable Biopsy Forceps	Oval	N	1.5	1200
FTL-BF-18-120-O-O-A	Disposable Biopsy Forceps	Alligator	N	1.8	1200
FTL-BF-18-120-W-O-A	Disposable Biopsy Forceps	Alligator	Y	1.8	1200
FTL-BF-18-120-O-O-R	Disposable Biopsy Forceps	Oval	N	1.8	1200
FTL-BF-18-120-W-O-R	Disposable Biopsy Forceps	Oval	Y	1.8	1200
FTL-BF-10-120-O-C-R	Disposable Biopsy Forceps	Oval	N	1.0	1200
FTL-BF-10-120-O-C-A	Disposable Biopsy Forceps	Alligator	N	1.0	1200
FTL-GF-10-120-15-FAA	Disposable Extration Basket	Spiral	N	1.0	1200
FTL-GF-18-120-RA	Disposable Foreign Body Grasping Forceps	Rat Tooth Alligator	N	1.8	1200



Mode	WiPL-1A	WiPL-1C	WiPL-1E
Voltage	DC 5V/3A		
Battery Capacity	6900 mAh		
Battery Duration	4 h		
Optical Adapter	Zoom lens	Prime lens	Zoom lens
Waterproof Level	IPX7		
Net Weight	350 g		
Sterilisation method	EO, immersion, low temperature, etc.		
Voltage	DC 12V/5A		
Battery Capacity	30000 mAh		
Battery Duration	8 h		
Screen Size	10.1 inch		
Resolution Ratio	1920*1080 (Full HD)		
USB	Max 64G, FAT32 / NTFS		
Video Output	HDMI		
Net Weight	3500 g		
Product Size	270mm*260mm*72mm		
Type of light source	LED		
Battery Capacity	3400 mAh	2000 mAh	2000 mAh
Battery Duration	5 h	3 h	3 h
Brightness Adjustment Levels	4 gears		
temperature of the colour	5500 k		
Net Weight	120g	100g	100g
Adaptor type	All types of rigid telescopes		
Waterproof Level	IPX7		
Sterilisation method	EO, immersion, low temperature, etc.		

Briview

Disposable Cholechoscope

Shanghai SeeGen Photoelectric Technology Co., Ltd.

SEEGEN
vision borderless



Shanghai SeeGen Photoelectric Technology Co.,Ltd
Add.: Building 5, No.4277 Yindu Rd.Minhang Dist., 201108, Shanghai China
www.seegenmed.com

✉ info@seegen.com.cn ☎ +86 021 5429 5355

SEEGEN
vision borderless

PTCS/ Transcystic LCBDE:CHV-US100/110/100D-H

**Total Solution For
Choledocolithiasis Visualization**

Transcholedochal LCBDE: CHV-100/100T/100D-E

Suction Button
Clear CBD and enhance visualization

Remote Buttons
Rapidly freeze and capture

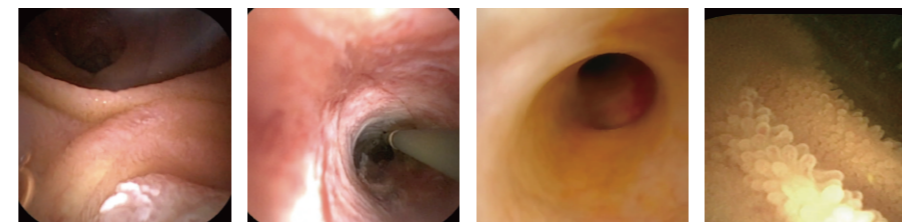
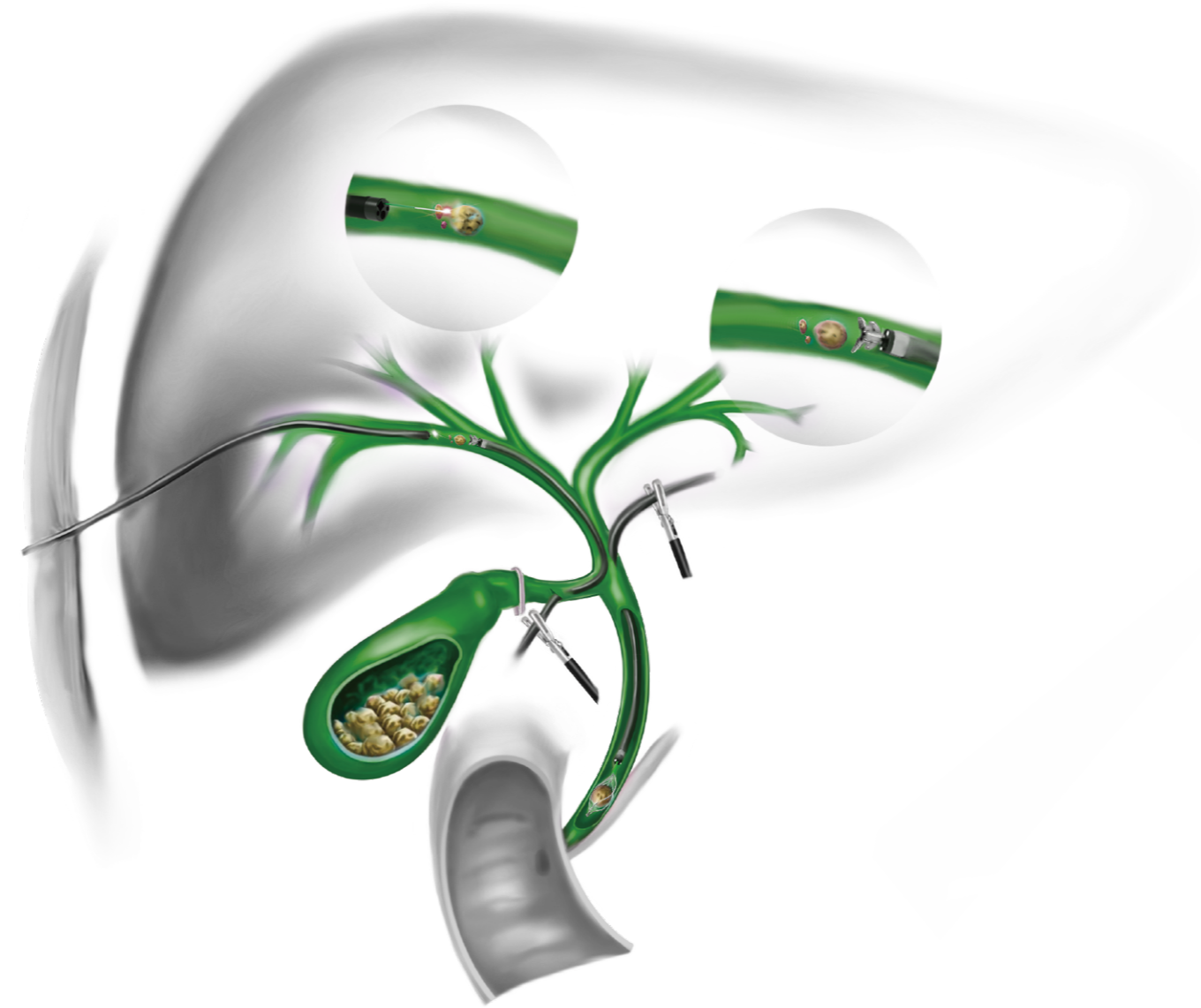
±90° Insertion Tube Rotation
Maintains a neutral position and minimizes fatigue without wrist rotation

Deflection Locker
Control the rebound and avoid bile duct damage

Angulation Range
Better angle design to avoid bile duct damage.

7.5FR
2.5mm

Extremely Slim Design



9.9FR
3.3mm

16FR
5.3mm

channel 2: Irrigation/Laser

channel 1: Instruments

Inner Channel Diameter: 2.6mm
Easier handling of big stones with 2.3mm instruments

Light-guiding Fibre Material:
Enhance brightness and improve image quality

